

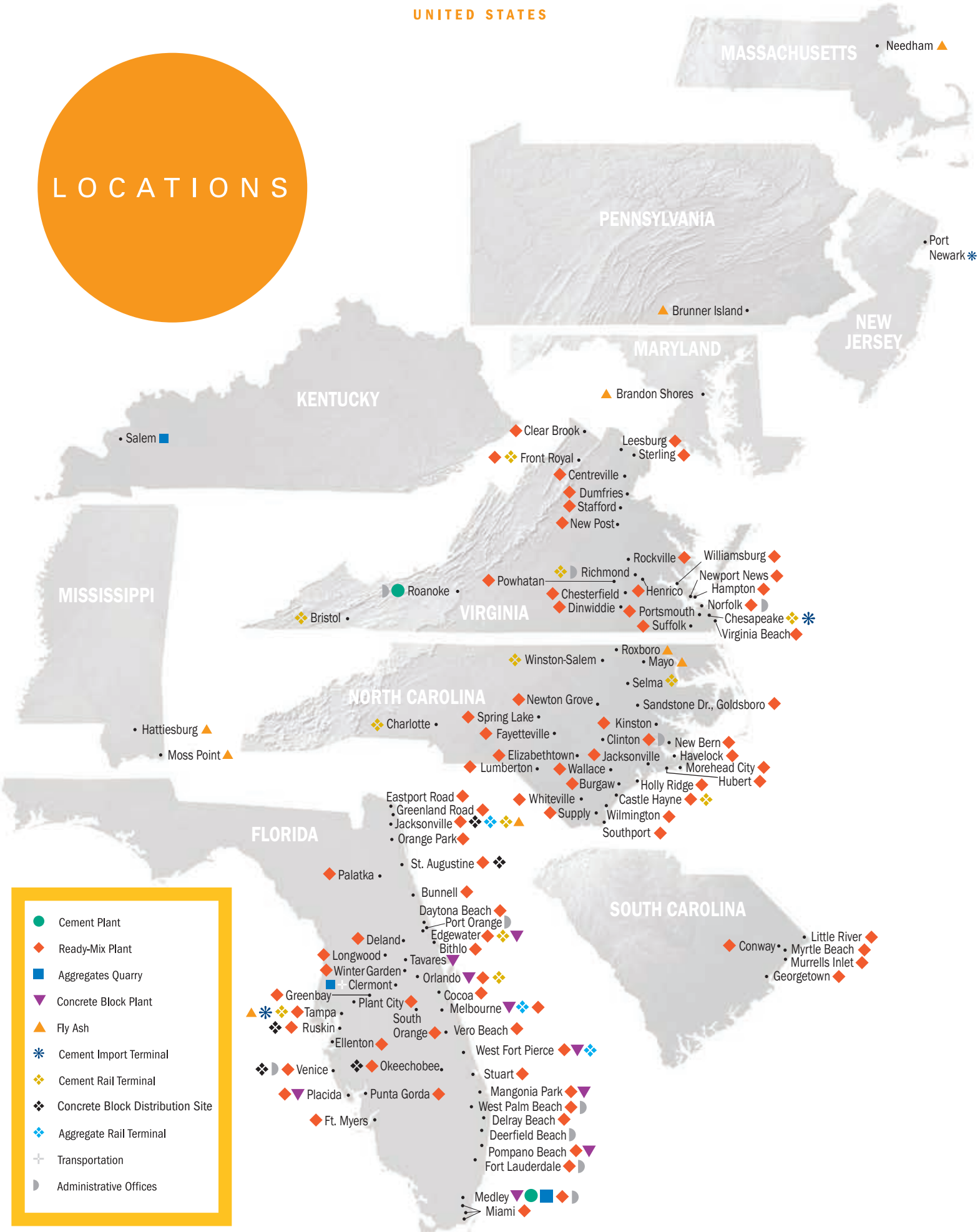


FACTS

The Titan America family of businesses is one of the premier cement and building materials producers in the eastern United States. We are best known by our brand names: Titan America®, Tarmac® and ProAsh®. Our business names include: Titan Virginia Ready-Mix LLC, Roanoke Cement LLC, Essex Cement LLC, Titan Florida Cement and Aggregates, Cumberland Resources, S&W Ready-Mix, Powhatan Ready-Mix and Separation Technologies LLC. Operations include cement plants, ready-mix concrete plants, concrete block plants, quarries, cement terminals, as well as fly ash production facilities. Headquartered in Norfolk, Virginia, the company employs approximately 2,000 people and continues to grow. Find more information about Titan America and our business at www.titanamerica.com.

UNITED STATES

LOCATIONS



- Cement Plant
- ◆ Ready-Mix Plant
- Aggregates Quarry
- ▼ Concrete Block Plant
- ▲ Fly Ash
- * Cement Import Terminal
- ◆ Cement Rail Terminal
- ◆ Concrete Block Distribution Site
- ◆ Aggregate Rail Terminal
- + Transportation
- ▶ Administrative Offices

BUSINESS ACTIVITIES



CEMENT

Cement is Titan America's core product. It is produced in both bulk and packaged varieties at two cement plants. At Roanoke Cement (Roanoke, VA), 1.3 million tons are produced annually. Titan's Pennsuco plant (Medley, FL) recently completed a \$200 million-plus modernization project that increased permitted production capacity to 2.4 million tons annually. Titan's plant is now one of the largest cement facilities in Florida. Our cement plants are recognized as two of the most environmentally friendly and efficient plants in the United States.

AGGREGATES

We produce and sell aggregates from two quarries in Florida and one in Kentucky. Titan's Pennsuco quarry (Medley, FL) is the fifth largest quarry in the U.S. producing more than 10.5 million tons of limestone products annually. Titan Florida Cement and Aggregate's Center Sand mine (Clermont, FL) produces one million tons of sand annually. Cumberland Resources (Salem, KY) produces 1.2 million tons of limestone aggregate annually.

BLOCK

Operating nine block plants from Edgewater south to Miami, Florida, Tarmac® is one of the nation's largest producers of concrete block. Our annual block production capacity is 120 million, eight-inch equivalent blocks. Our Pennsuco block plant (located north of Miami) is the largest block plant under one roof in the United States.

READY-MIX CONCRETE

We are one of the top producers of ready-mix concrete in the United States, selling under the Titan America® brand name in Virginia and

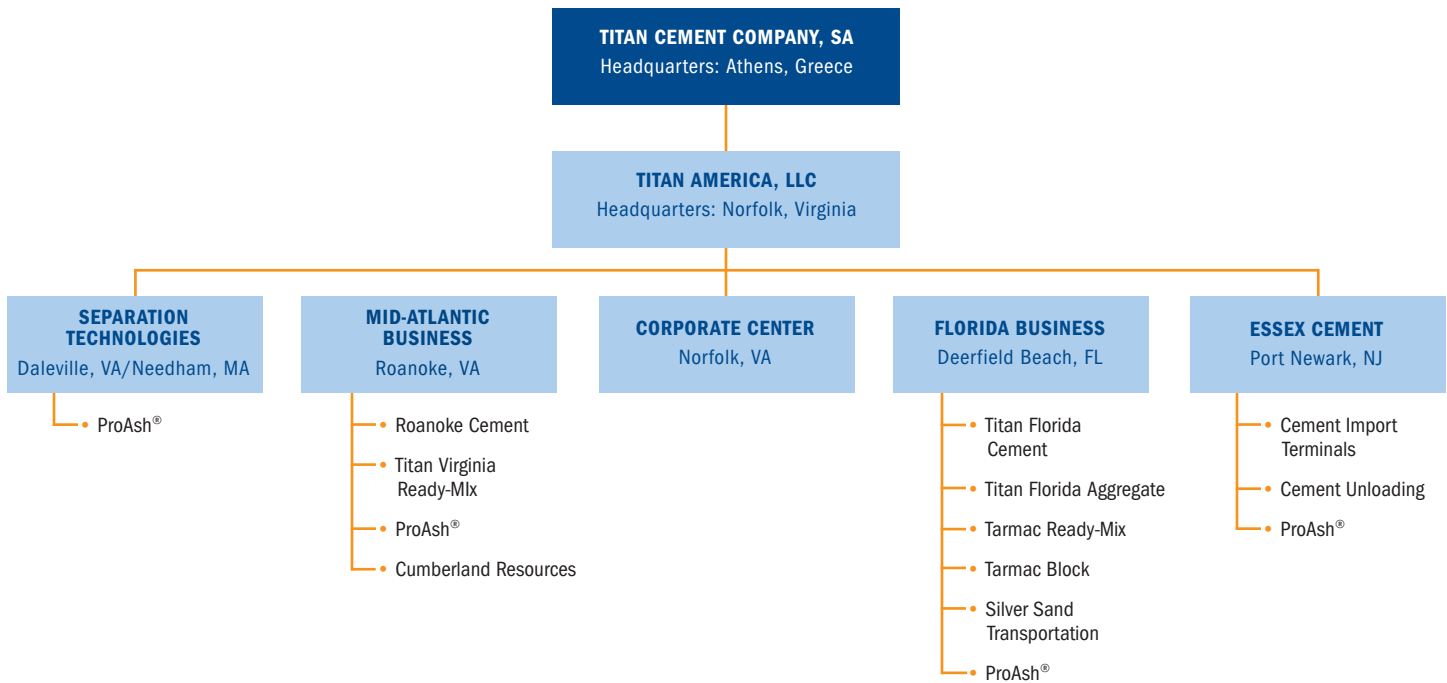
the Tarmac® brand name in Florida. We produce more than five million cubic yards of concrete annually from more than 80 ready-mix plants throughout Virginia, the Carolinas and Florida. Our ready-mix concrete is found in highways, bridges, skyscrapers and residential construction.

CEMENT AND AGGREGATE DISTRIBUTION

Titan America businesses manage product distribution by way of road, rail and water. Except for central Florida, where Titan America's Silver Sand Transportation hauls sand, all rail, water and most road transport is carried out by third parties. Our cement import terminals and ship unloading (using its two barge-mounted ship unloaders) is managed by Essex Cement at Port Newark, NJ and from our newest terminal in Tampa, FL. Titan America operates a total of 14 cement and aggregates terminals including both rail and cement import terminals located all along the eastern seaboard.

FLY ASH AND ASH MANAGEMENT SYSTEM

Titan America, through its business Separation Technologies, offers coal-powered utility companies expertise in the processing, marketing, utilization and transportation of coal combustion products for a total ash management solution. Our patented electrostatic process, which makes us the leading producer of processed fly ash in the U.S., is marketed under the ProAsh® brand name. We offer the fastest growing technology for CCP management in the world with environmentally responsible operations serving markets in the United States, Canada and Europe.



ORGANIZATIONAL STRUCTURE

Titan America has three business units: the Florida Business, the Mid-Atlantic Business, and Separation Technologies. Within these business units we produce, market and distribute: cement, aggregates, ready-mix concrete, concrete block and fly ash.

PARENT COMPANY

Our parent company, Titan Cement, headquartered in Athens, Greece, celebrated 100 years in the building materials industry in 2002. Titan Cement operations include cement, ready-mix concrete, aggregates and related construction materials. The companies of the Titan Group are located in four main geographical areas: Greece and the European Union; United States and Canada; Southeastern Europe; and Eastern Mediterranean.

Titan Cement is publicly traded on the Athens Stock Exchange.



FLORIDA BUSINESS

Administrative Offices
455 Fairway Dr.
Deerfield Beach, FL 33441
954-481-2800

Cement/Aggregates
800-458-4250

Center Sand/Silver Sand
800-366-7263

Ready-Mix & Concrete Products:

North-Central Region
800-226-2688
800-520-2083

Southern Region
888-329-6332

Eastern Region
800-798-5894

West Coast
North 800-680-6498
South 800-233-4148

TITAN AMERICA LLC

Corporate Office
1151 Azalea Garden Rd., Norfolk, VA 23502
800-468-7622
www.titanamerica.com

MID-ATLANTIC BUSINESS

Administrative Offices
6071 Catawba Rd.
Troutville, VA 24175
540-966-1541

Roanoke Cement
Sales & Customer Service
800-782-7622

Titan Virginia Ready-Mix
Hampton Roads
Dispatch 757-533-7164
General 757-533-7200

Northern Region
Dispatch Centers
Sterling 800-457-7728
New Post 540-373-3841
Other Inquiries
703-471-0044

S&W Ready-Mix
910-592-1733

Powhatan Ready-Mix
800-642-0198

Cumberland Resources
270-988-3916

ESSEX CEMENT

Sales and Customer Service
973-344-5903

SEPARATION TECHNOLOGIES

Administration and Operations
1616 Roanoke Rd.
Daleville, VA 24083
540-966-6847

Engineering and Technical Center
101 Hampton Ave.
Needham, MA 02494
781-455-6600

1-888-4ProAsh

NE Region Sales
617-817-1699

SE Region Sales
904-710-6029

